

# SL20-22S Pleated

ScreenLine® SL20-22S Pleated is a patented magnetic system with manual operation (raising function) for pleated blinds incorporated within 20-mm or 22-mm double glazing units and fitted into window frames with whatever degree of inclination.

The blind movement is transferred from a magnetic device (consisting in a removable knob) positioned centrally on the outer surface of the internal glass to a similar internal magnet located in the moveable head-rail, so as to absorb possible glass deflections. The blind can be adjusted and locked, through a special brake, at any inclination and raised in all directions: from right to left, left to right, from the top to the bottom and vice versa.

The performances in terms of heat reflection and adjustment of light transmission of Verosol® pleated fabrics, which are coated with an aluminium layer on one side, are optimised by special "U"-shaped spacer bars.

The special features and the high product quality make the system ideal for attic, dormer and skylight applications.

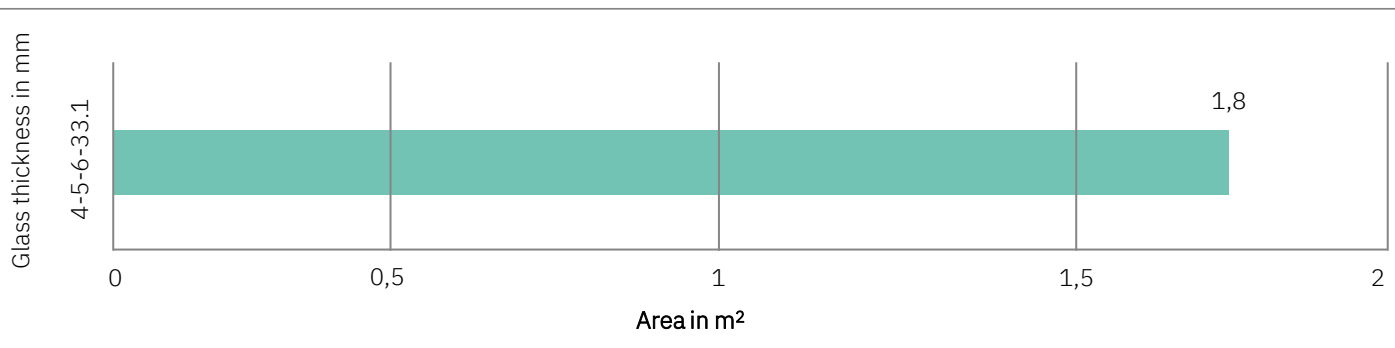
SL20-22S Pleated ensures with time the insulating properties of the double-glazing unit, notably protection from dirt or weather conditions. The integrated unit can be fitted into the window frame like standard insulating glass.

The system is supplied with warm edge spacer bars as standard. The magnetic slider is treated with a Sanitized®\* patented finish, which provides a long-lasting antimicrobial protection function.



\* Active biocidal substance: silver borophosphate glass

## FEASIBILITY CHARTS



### Possible dimensions

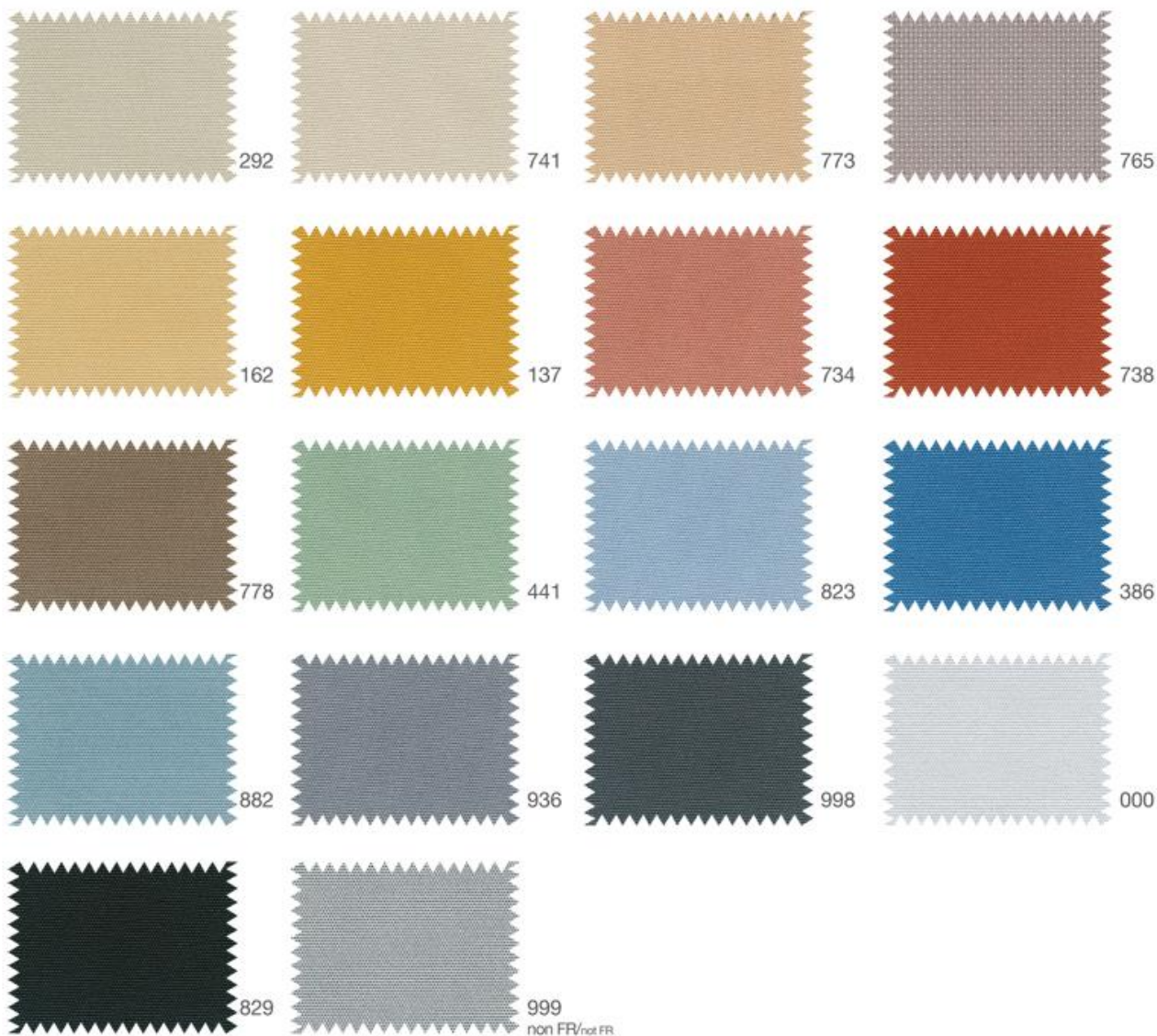
W min = 200 mm    W max = 1200 mm  
H min = 200 mm    H max = 2000 mm

### In case of bottom-top function:

- Maximum area = 1.2 m<sup>2</sup>
- Glass thickness = 4-5 mm

## COLOUR RANGE

*Verosol fabric – metallised on the outside*



*Verosol metallised*



816 FR

Transparent



812 FR

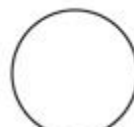
Semi-transparent



878 FR

Opaque

*Pleated Vanity not metallised*



C000



C010