

# SL20-22SP Pleated 2.0

ScreenLine® SL20-22SP Pleated 2.0 is a manually-operated patented magnetic system with raising and tilting function for pleated blinds encapsulated within 20 and 22-mm cavity double glazing units.

SL20-22SP Pleated 2.0 is operated by a magnetic slider, placed on the right or left-hand edge of the glass. A narrow adhesive transparent profile ensures the linear movement of the slider. The blind is raised and lowered by moving the slider up or down.

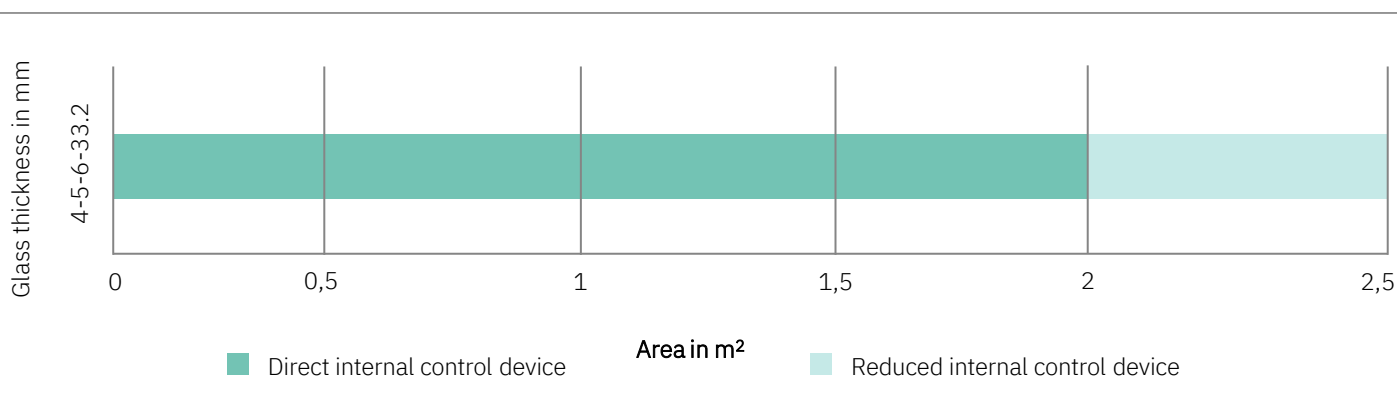
SL20-22SP Pleated 2.0 is suited to all types of window frames. It ensures with time the insulating properties of the double-glazing unit, notably protection from dirt or weather conditions. The integrated unit can be fitted into the window frame like standard IGUs.

The system is supplied with warm edge spacer bar as standard. The magnetic slider is treated with a Sanitized®\* patented finish, which provides a long-lasting antimicrobial protection function.



\* Active biocidal substance: silver borophosphate glass

## FEASIBILITY CHARTS



### Possible dimensions

W min = 300 mm    W max = 1500 mm  
H min = 450 mm\*    H max = 2200 mm

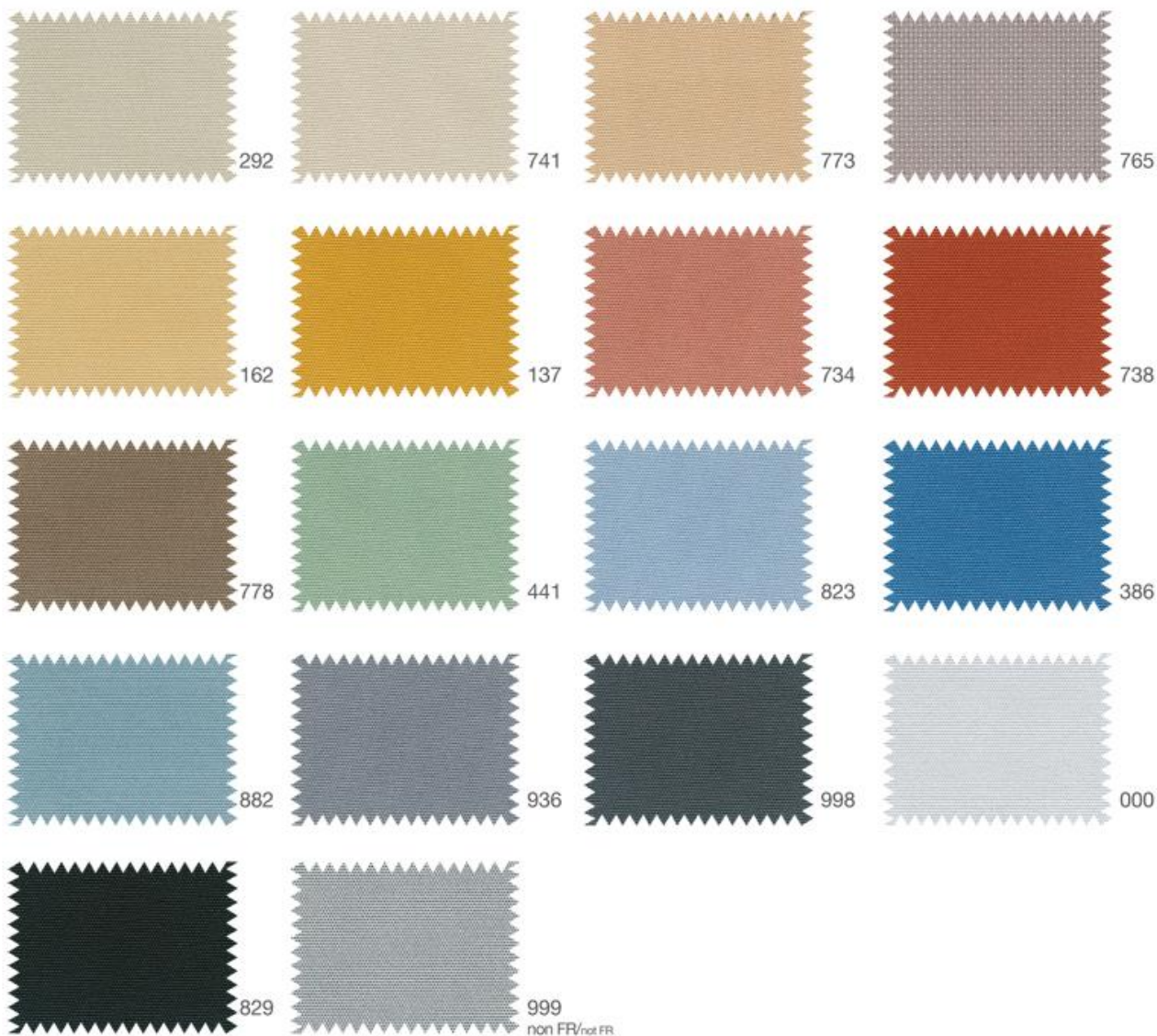
### Maximum height possible according to width

with W from 300 to 400 mm    H max = 1800 mm  
with W from 401 to 1500 mm    H max = 2200 mm

\* H min = 450 mm with direct internal control device, H min = 900 mm with reduced internal control device

## COLOUR RANGE

*Verosol fabric – metallised on the outside*



*Verosol metallised*



816 FR

Transparent

812 FR

Semi-transparent

878 FR

Opaque

*Pleated Vanity not metallised*



C000

C010