

SL20-22MB Pleated

ScreenLine® SL20-22MB Pleated is a motorised system with raising function for pleated blinds incorporated within 20-mm or 22-mm insulating glass units and featuring Verosol® fabrics, which are coated with an aluminium layer on one side.

The blind is raised or lowered via a device consisting of a brushless motor controlled by a wide range of control units (compatible with the main BMS systems), which allows the simultaneous and synchronised operation of several blinds.

The motor and the entire electronic blind management system are positioned within the head rail, on a specially designed slide that will reduce vibrations, thus making the system very silent.

No other control device is applied on glass or window frame, since the motor is activated by means of wall-mounted push buttons or remote control (options).

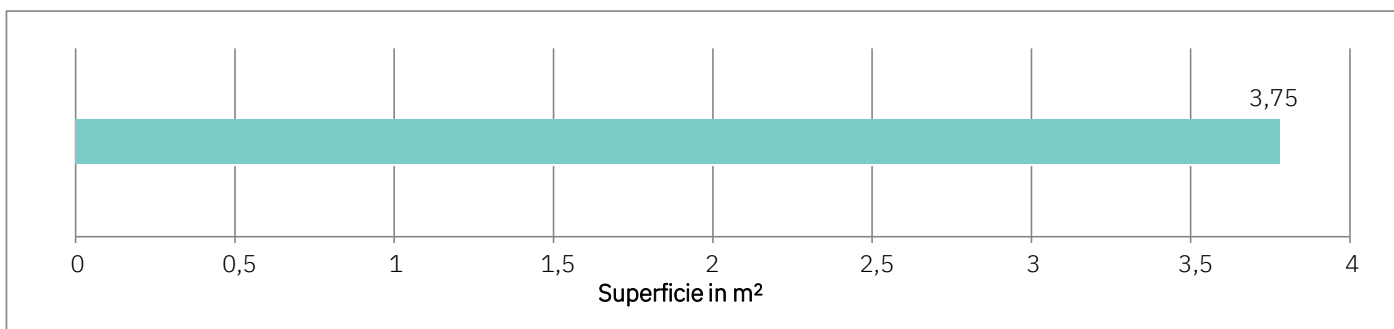
The purity of the aesthetic appearance and the high technical performances of the system make it particularly suited to prestigious projects.

The kit can be assembled, mounted and transported very quickly and easily. It ensures with time the insulating properties of the insulating glass unit, notably protection from dirt or weather conditions.

The system is supplied with warm edge spacer bars as standard.



FEASIBILITY CHARTS



Possible dimensions

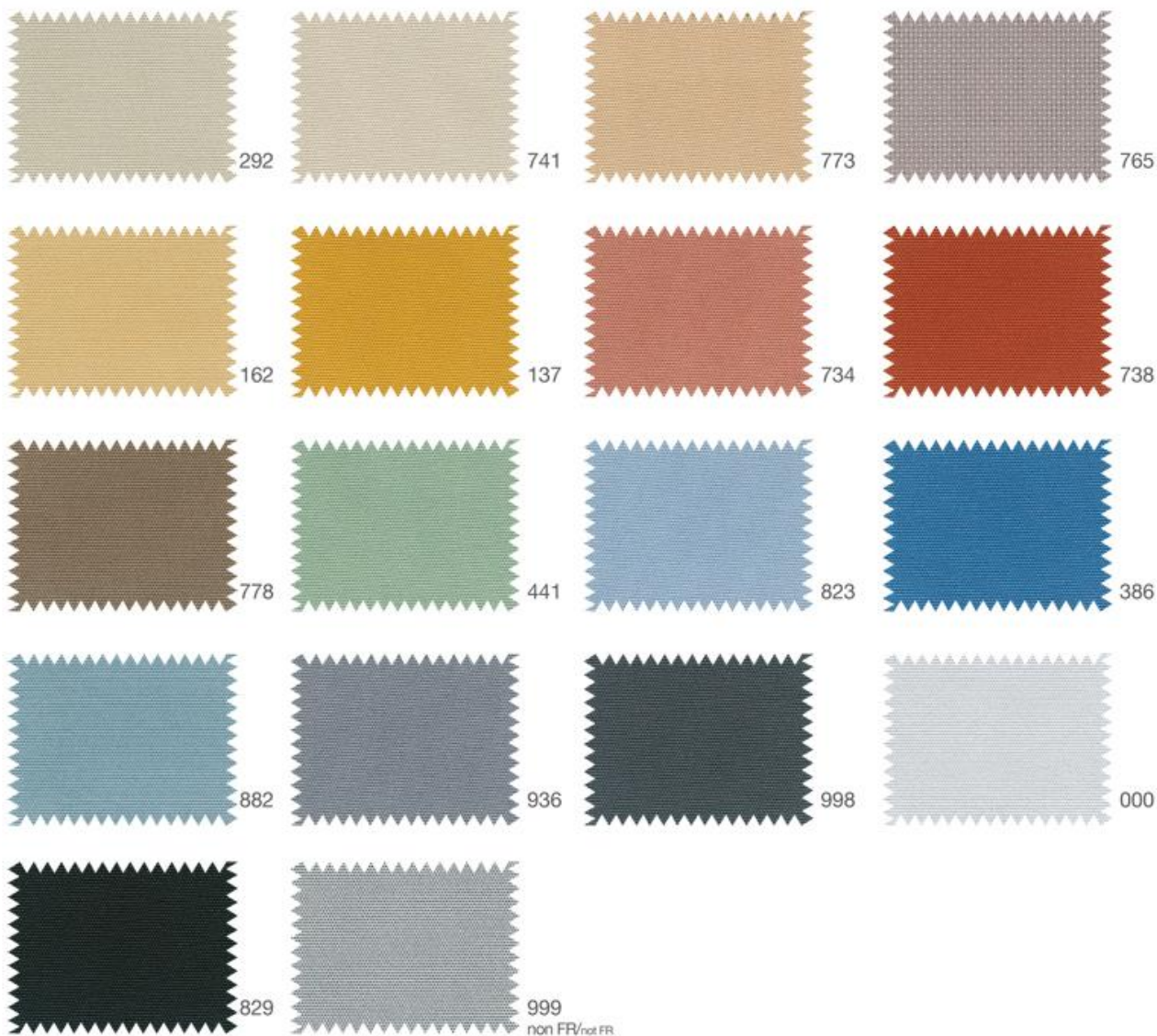
W min = 300 mm W max = 1500 mm
 H min = 300 mm H max = 2500 mm

Maximum height possible according to width

with W from 300 a 350 mm H max = 1670 mm
 with W from 351 a 400 mm H max = 2020 mm
 with W from 401 a 1500 mm H max = 2500 mm

COLOUR RANGE

Verosol fabric – metallised on the outside



Verosol metallised



816 FR

Transparent

812 FR

Semi-transparent

878 FR

Opaque

Pleated Vanity not metallised



C000

C010