

SL20-22C Pleated

ScreenLine® SL20-22C Pleated is a patented magnetic system with manual operation (raising function) for pleated blinds incorporated within 20-mm or 22-mm double or triple glazing units and featuring Verosol® fabrics, which are coated with an aluminium layer on one side.

The external magnetic device applied on the glass by means of high-resistance adhesive tape contains a cord loop and a magnet that is perfectly interfaced with the magnetic joint of the internal drive, which is completely housed inside the head rail. The movement provided to the cord enables the rotation of the magnets that activate the blind.

The cord is kept under tension by means of a special cord tensioner applied on the glass.

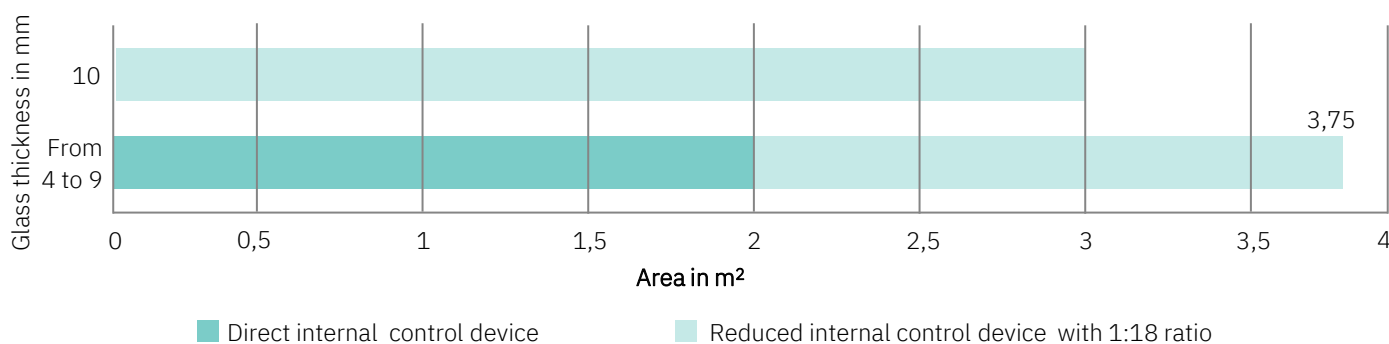
SL20-22C Pleated is particularly suited to structural façades, although there are no limits to its application.

SL20-22C Pleated ensures with time the insulating properties of the double or triple glazing unit, notably protection from dirt or weather conditions. The integrated unit can be fitted into the window frame like standard insulating glass.

The system is supplied with warm edge spacer bars as standard.



FEASIBILITY CHARTS



Possible dimensions

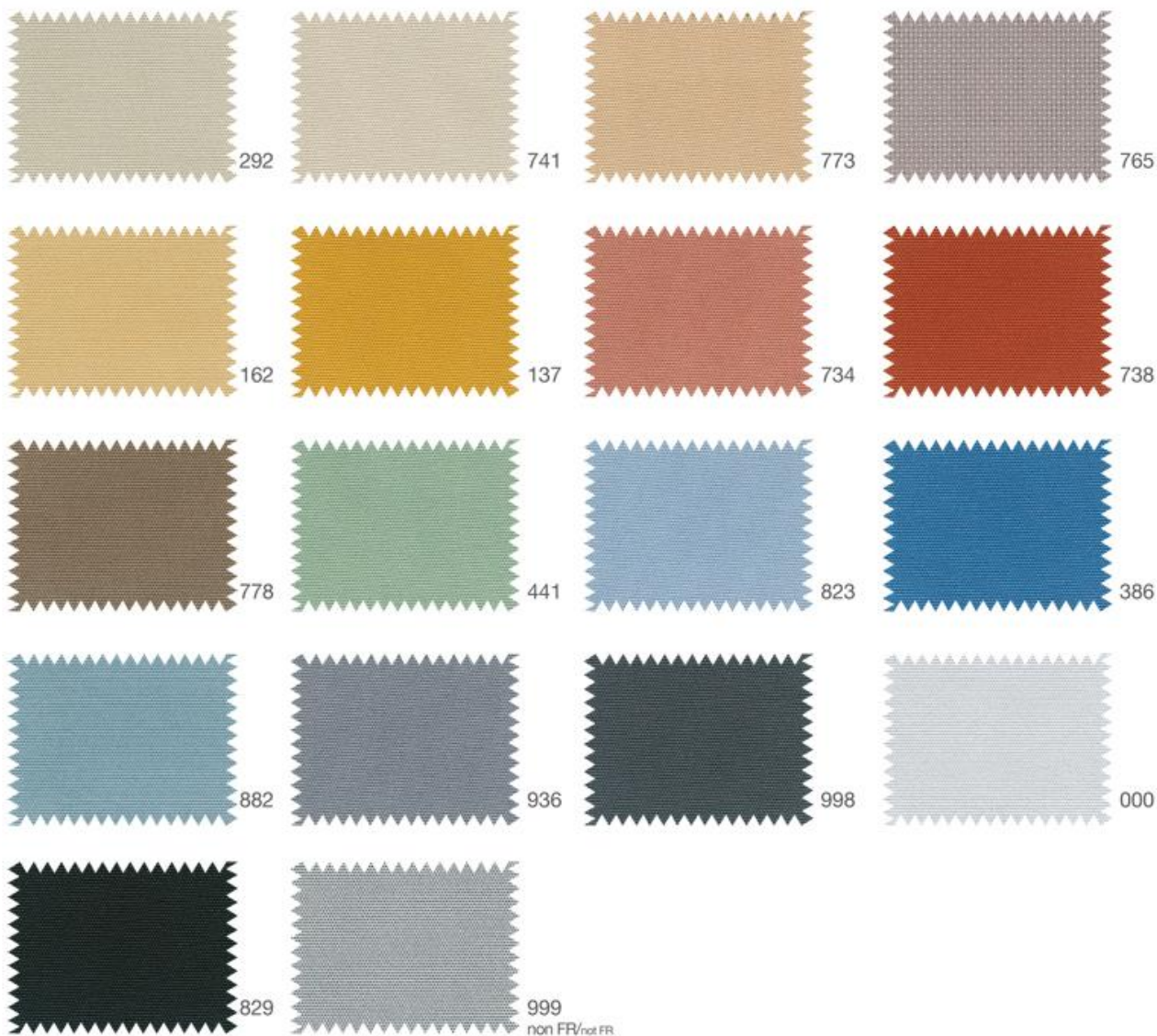
W min = 300 mm W max = 1500 mm
H min = 300 mm H max = 2500 mm

Maximum height possible according to width

with W from 300 to 350 mm	H max = 1100 mm
with W from 351 to 400 mm	H max = 1800 mm
with W from 401 to 450 mm	H max = 2150 mm
with W from 451 to 1500 mm	H max = 2500 mm

COLOUR RANGE

Verosol fabric – metallised on the outside



Verosol metallised



816 FR

Transparent



812 FR

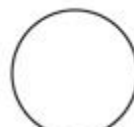
Semi-transparent



878 FR

Opaque

Pleated Vanity not metallised



C000



C010